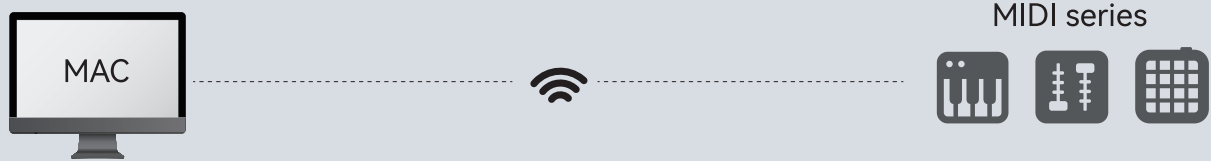


WIRE CONNECTION



Connect the device to a PC or Mac using the provided USB cable, use the OTG cable to connect it directly to a mobile device.

WIRELESS CONNECTION



Mac: In the Audio MIDI Setup > Show MIDI Studio, click the "BT" icon located in the upper-right to establish a wireless connection.



Windows: Scan the QR code on the back of the card to copy the download link of BT MIDI Connector (Only support WIN10/11)



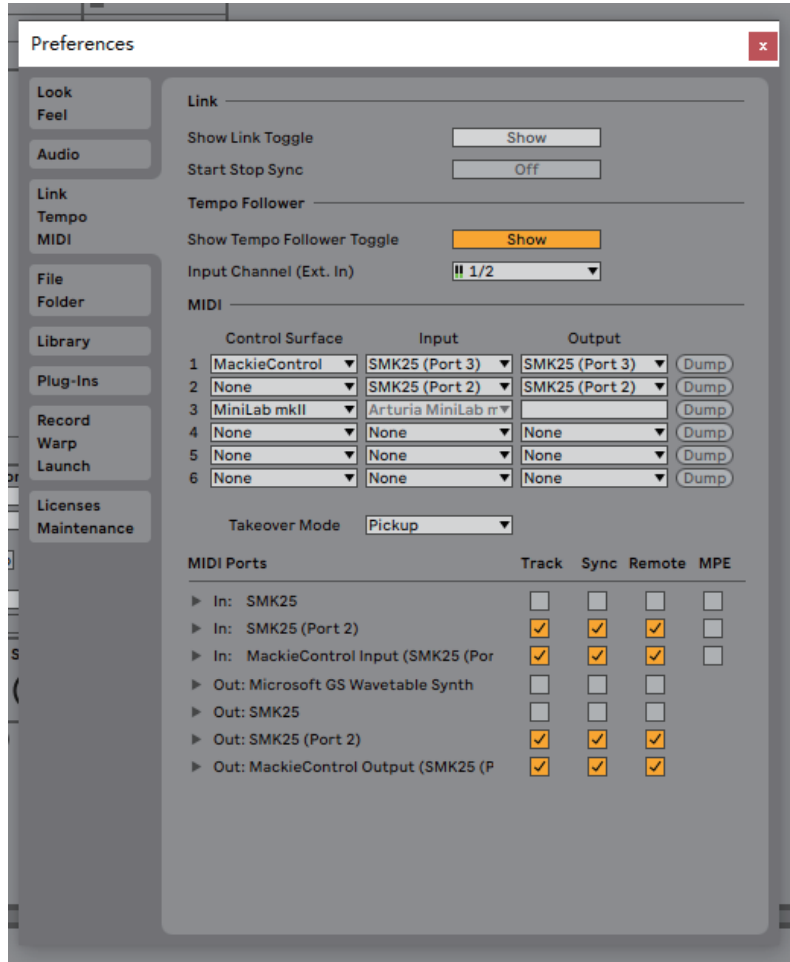
iOS: Launch a BLE-compatible application, such as GarageBand, and connect the device via the software's settings.



Android: Launch a BLE-compatible application, such as FL Studio Mobile, or install MIDI BLE Connect for Android, and follow the instructions within the application to connect your device and use it with any software that supports MIDI input.

1: Set up in Ableton live

- 1: Hold BT & PAD-B press Pad 1 select the Presets for Ableton live;
- 2: In the Options - preferences menu select Link Tempo MIDI;



- 3: Turn on the Track/Sync/Remote for SMK25(port 2)/SMK(port 3) Input & Output;
In the Control surface manual first line select Mackie control, Input & Output select to SMK(Port 3)
In the Control surface manual second line select None, Input, Output select to SMK(Port 2)
When Presets set properly, KNOB-B&PAD-B, will use to change settings inside Ableton live
Play , Stop , Record button will automatically map to Daw transport control;

Knob9-Knob16 are volume of Track 1-Track 8;

Pad 9 – Scroll Up the track line;

Pad 10 – Scroll Down the track line;

Pad 11 -Rewind;

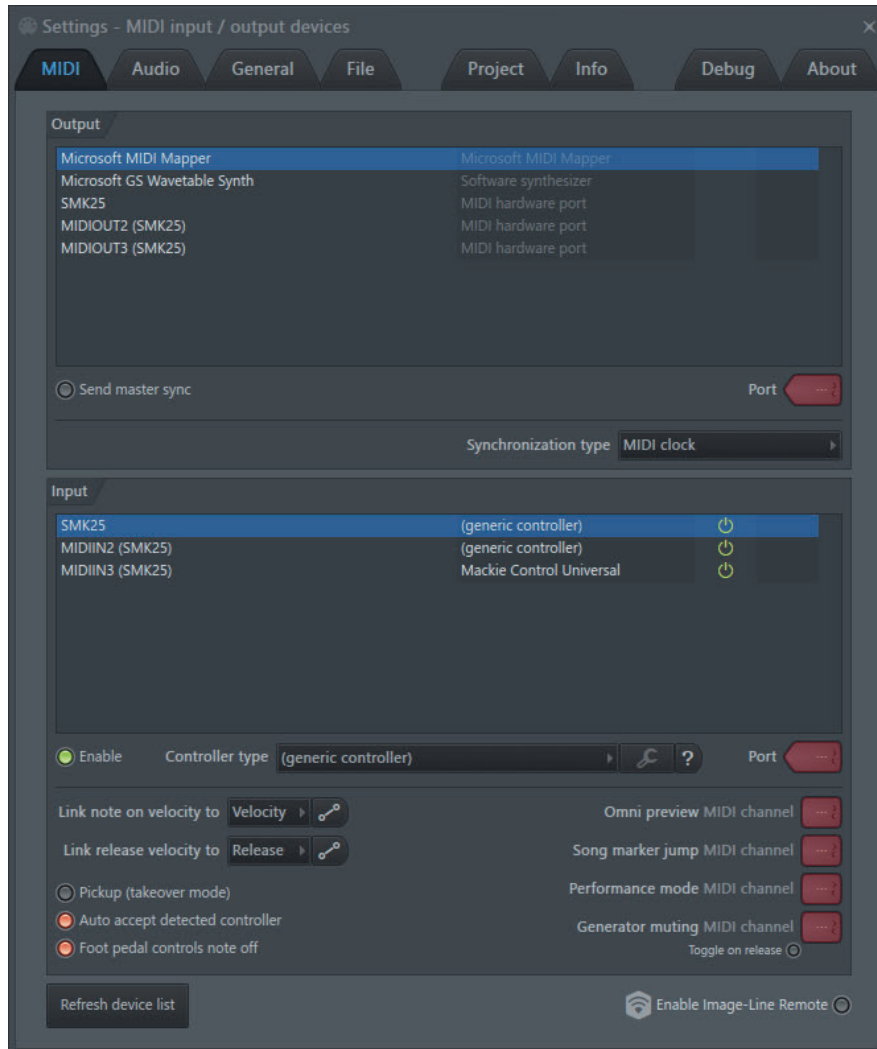
Pad 12 -Fast forward;

Pad 13-16 are recording for Track 1-Track 4;

In Drum Rack Pad 1-Pad 8 will map to C1 to G1;

2:Set up in FI Studio:

- 1: Hold BT & PAD-B press Pad 2 select the Presets for FI Studio;
- 2: In the Options menu select MIDI Settings;



- 3 : Set Controller type of MIDIIN3(SMK25) to Mackie Control Universal; Controller type of MIDIIN2 to generic controller;

When Presets set properly, KNOB-B&PAD-B, will use to change settings inside FI Studio
Play , Stop , Record button will automatically map to Daw transport control;

Knob9-Knob16 are volume of Track 1-Track 8 in the mixer;

Pad 9 – Scroll up;

Pad 10 -Scroll Down;

Pad 11- Moving Left;

Pad 12 -Moving Right;

Pad 13 – Rewind;

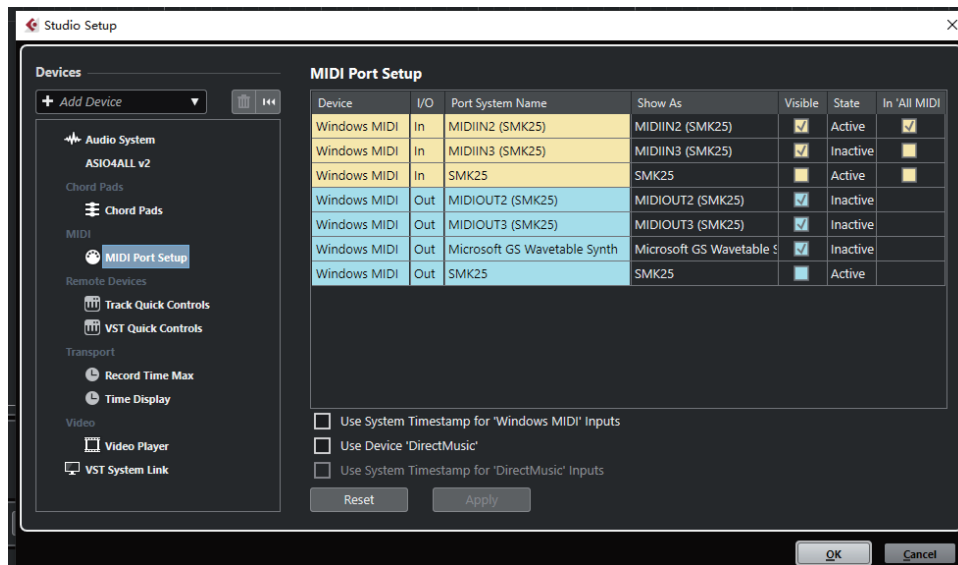
Pad 14 – Fast forward;

Pad 15 – Metronome;

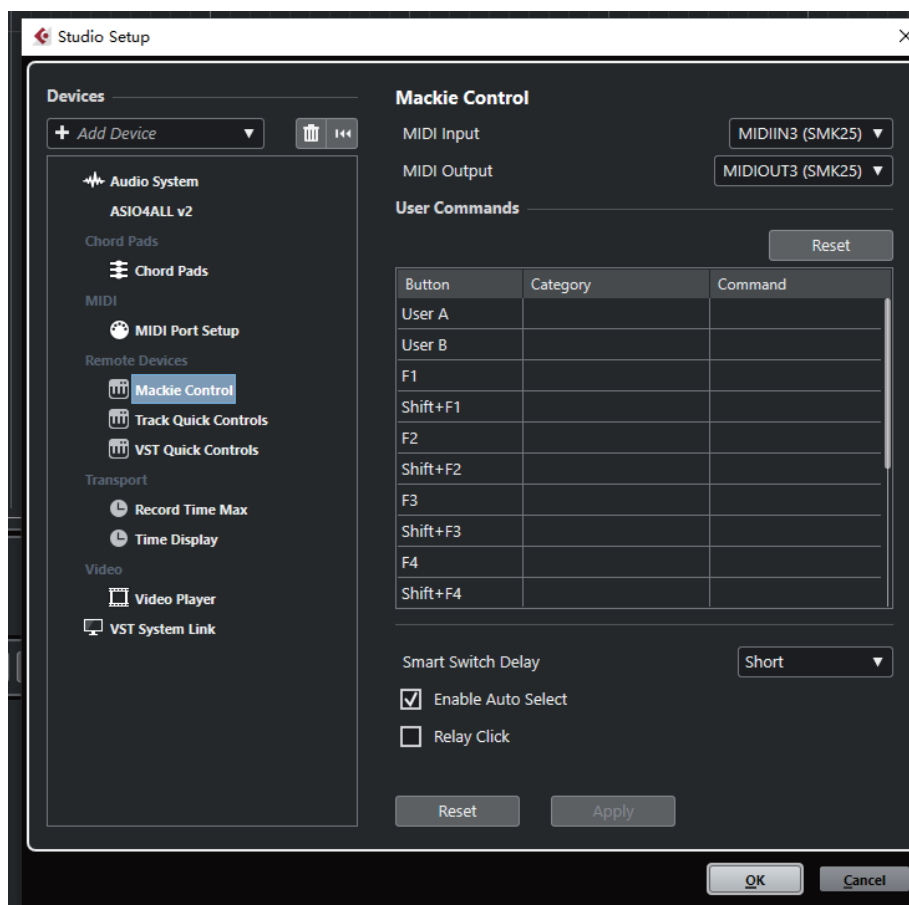
Pad 16 –open up sampler

3:Set up in Cubase

- 1: Hold BT & PAD-B press Pad 3 select the Presets for Cubase;
- 2: Click Studio-Studio Set up in the pulldown menu;



- 3: Click the input & output for MIDIIN2 & MIDIIN3 . Click add device select Mackie control;



- 4:Midi input & output select to MIDIIN3 and MIDIOUT 3

When Presets set properly, KNOB-B&PAD-B, will use to change settings inside Cubase
Play , Stop , Record button will automatically map to Daw transport control;
;

Knob9-Knob16 are volume of Track 1-Track 8;

Pad 9 – Scroll up;

Pad 10 -Scroll down;

Pad 11 – Rewind;

Pad 12 – Fast forward;

Pad 13 – Read Automation;

Pad 14 – Write Automation;

Pad 15 – Loop;

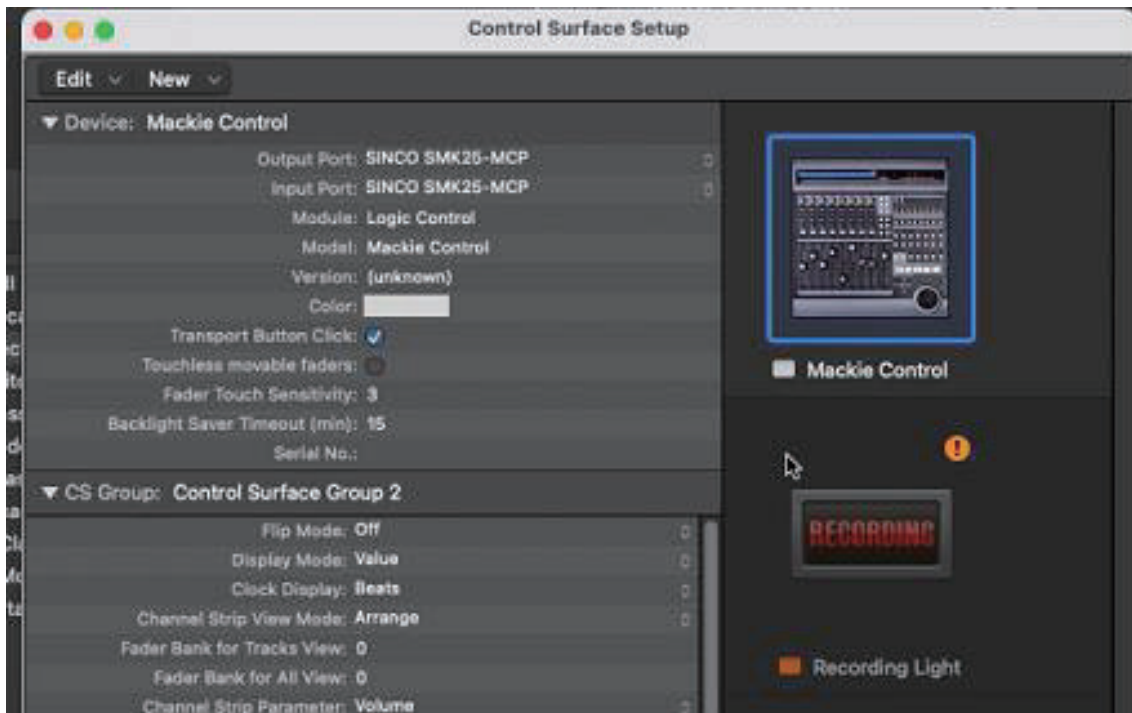
Pad 16 -Open up Mixer;

4: Setup in Logic Pro X;

- 1: Hold BT & PAD-B press Pad 4 select the Presets for Logic Pro X;
- 2: In the Logic Pro X – Control Surfaces- Setup-New-Install Select Mackie Control & Recording Light;



- 3: In the Recording Light, Output Port & Input Port select to SMK25-Master;



- 4: In the Mackie Control Device, Output Port & Input Port select to SMK25-MCP;

When Presets set properly, KNOB-B&PAD-B, will use to change settings inside Logic pro
Play , Stop , Record button will automatically map to Daw transport control;

;

Knob9-Knob16 are volume for track 1 -track 8;

Pad 9 – Scroll up;

Pad 10 -Scroll down;

Pad 11 – Rewind;

Pad 12 – Fast forward;

Pad 13 – Read Automation;

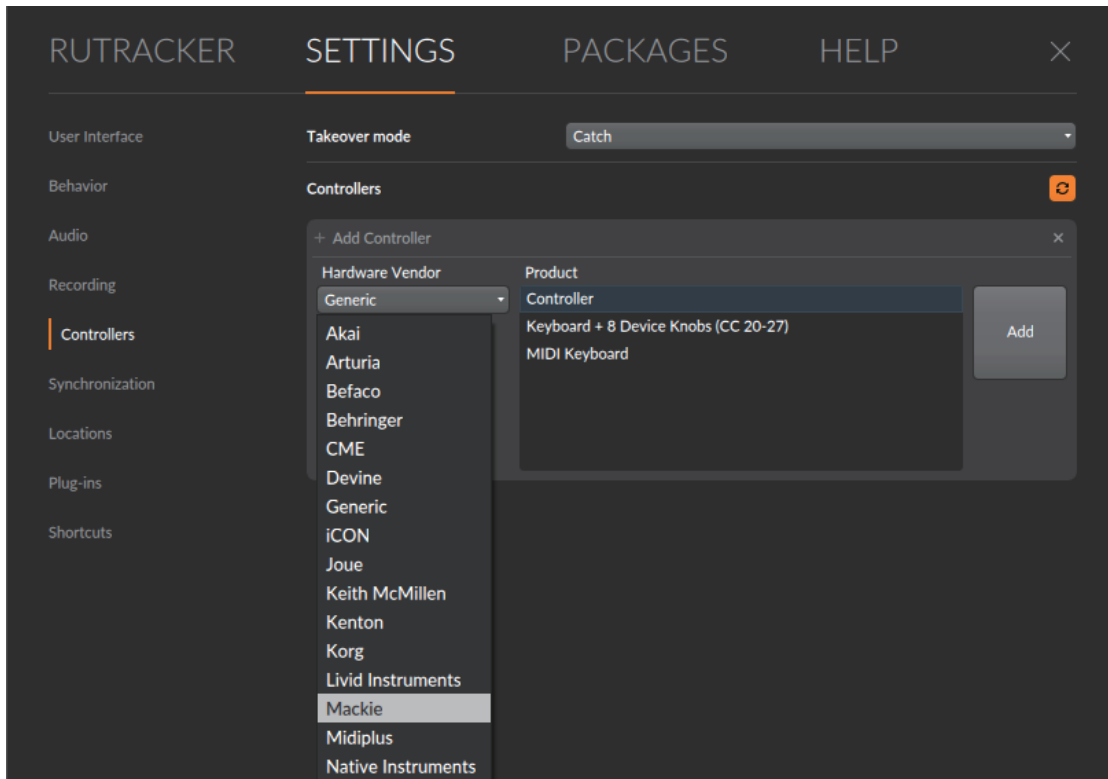
Pad 14 – Write Automation;

Pad 15 – Loop;

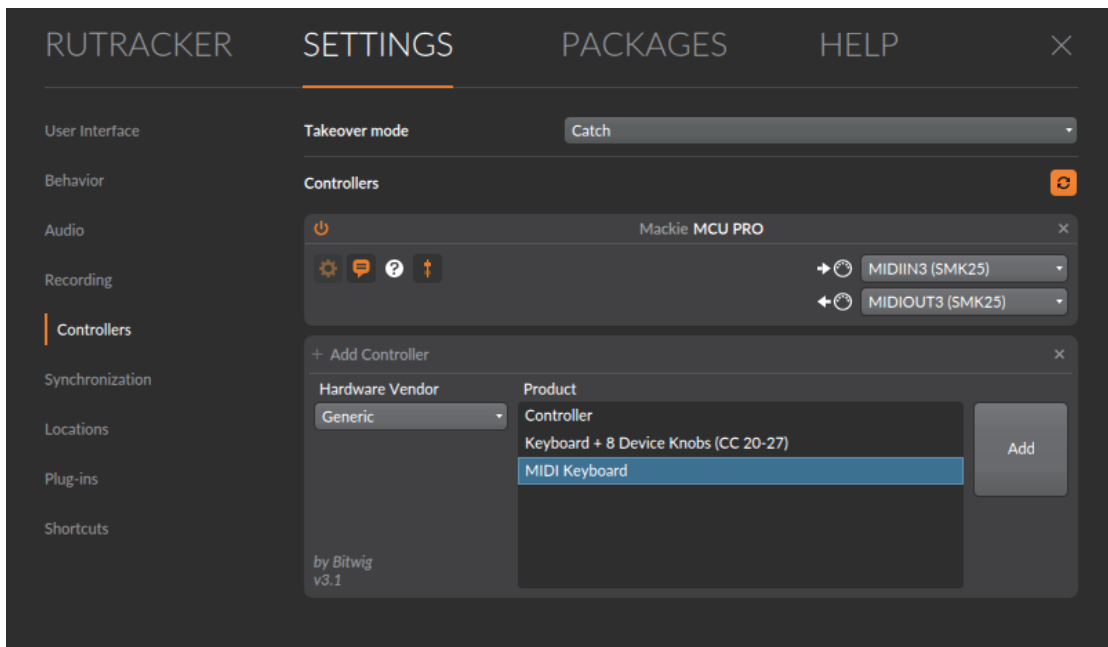
Pad 16 – Metronome;

5: Set up in Bitwig

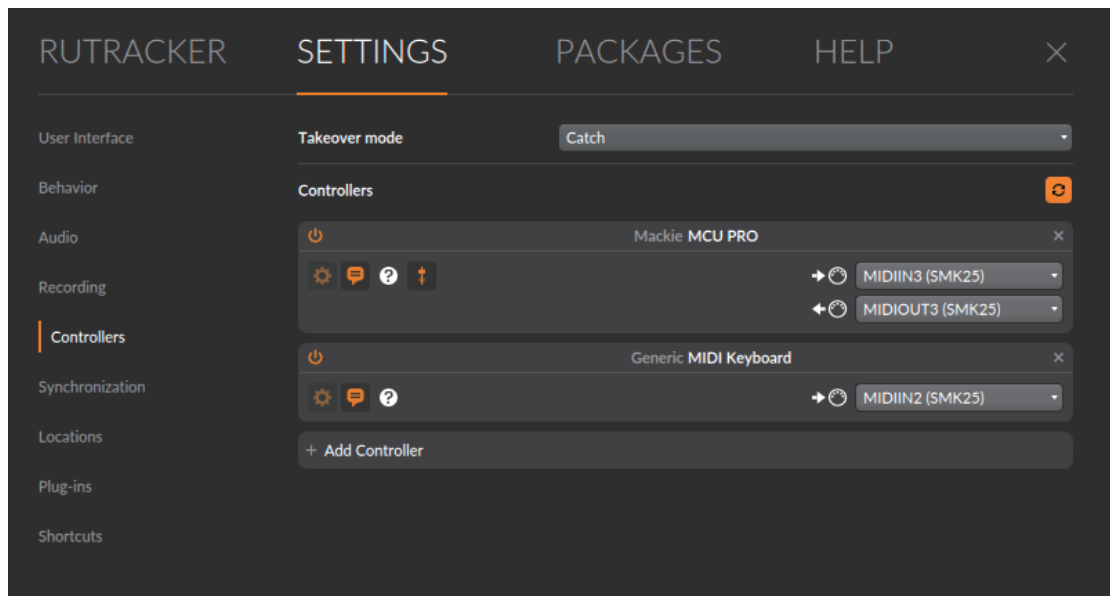
- 1: Hold BT & PAD-B press Pad 5 select the Presets for Bitwig;
- 2: In the Bitwig icon-Settings – Controller, Click the Add Controller;



- 3: In the Hardware Vendor menu select Mackie



- 4: Input & Output select to MIDIIN(SMK25) & MIDIOUT(SMK25)



Add another controller Hardware Vendor select Generic , Input select to MIDIIN(SMK25);
When Presets set properly, KNOB-B&PAD-B, will use to change settings inside Bitwig,
Play , Stop , Record button will automatically map to Daw transport control;

Knob9-Knob16 are volume for track 1 -track 8;

Pad 9 – Scroll up;

Pad 10 -Scroll down;

Pad 11 – Moving Left

Pad 12 – Moving Right

Pad 13 – Rewind;

Pad 14 – Fast forward;

Pad 15 -Loop;

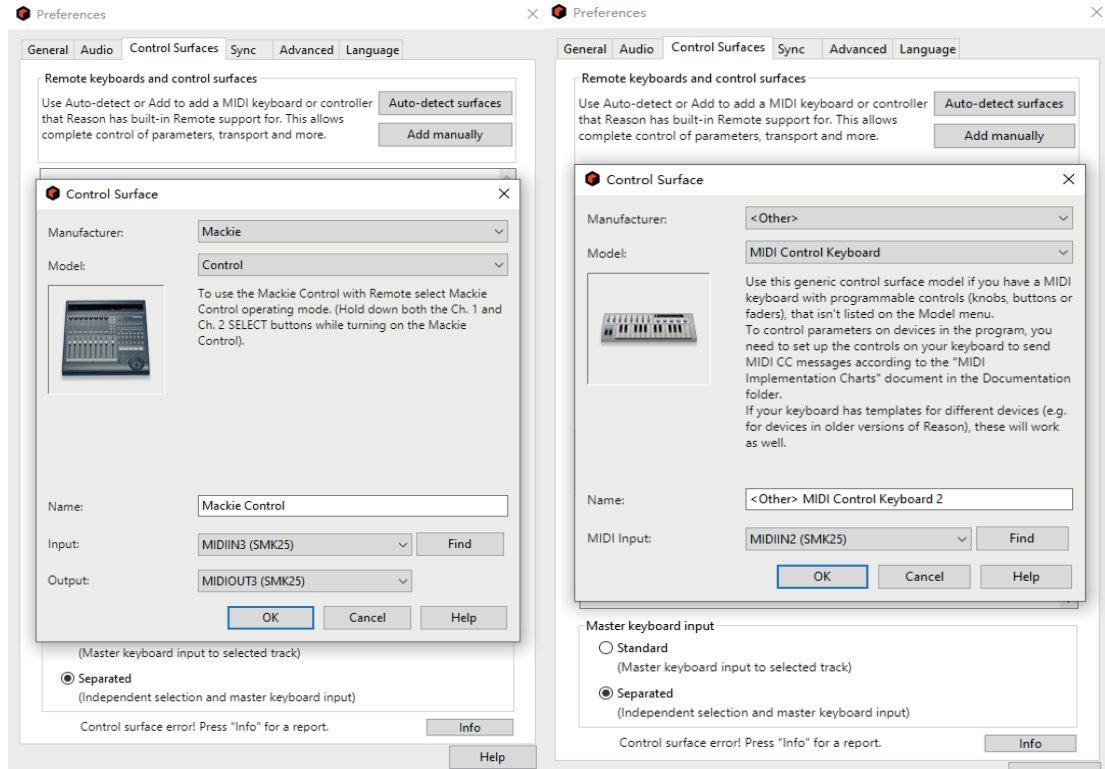
Pad 16 - Metronome;

\

6: Setup in Reason

1: Hold BT & PAD-B press Pad 6 select the Presets for Reason;

2: In the Edit-Perferences-Control Surface



3: Click Add manually. Manufacturer select to Mackie. Model select to Control; Input & Output select to MIDIIN3(SMK25)&MIDIOUT3 (SMK25)

Add another control surface, Manufacturer select to Other, MIDI input select to MIDIIN2(SMK25);

When Presets set properly, KNOB-B&PAD-B, will use to change settings inside Reason Play , Stop , Record button will automatically map to Daw transport control;

;

Knob16 is volume of selected track;

Pad 1 -Pad 8 will automatically map to kong drum designer;

Pad 9 – Scroll up;

Pad 10 -Scroll down;

Pad 11 – Rewind;

Pad 12 – Fast forward;

Pad 13 – Mute Selected Track;

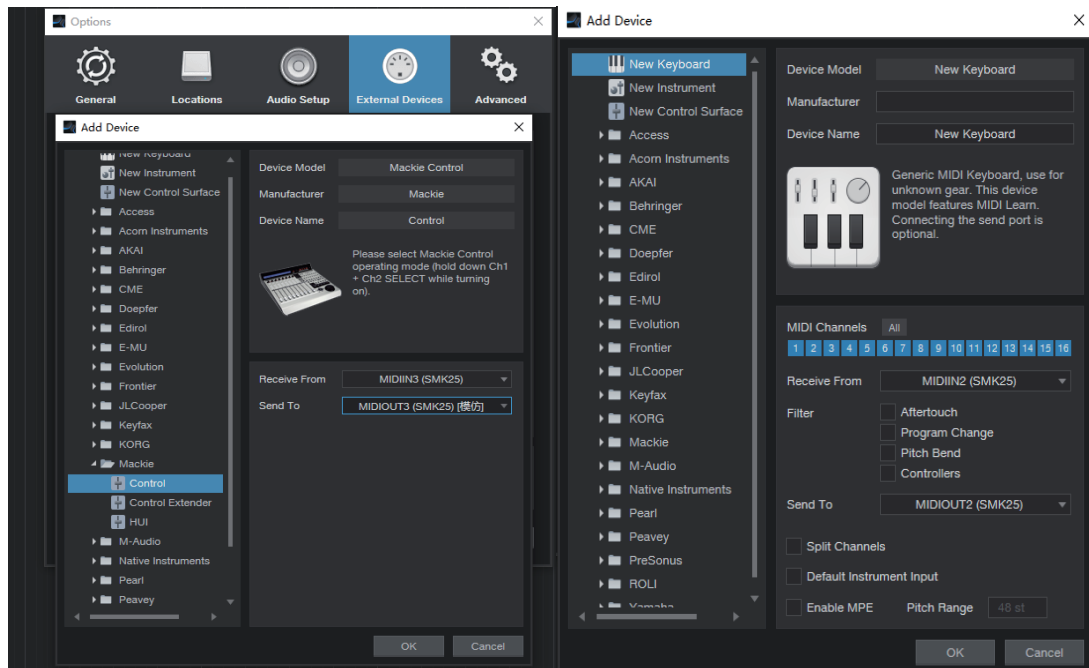
Pad 14 – Solo Selected Track;

Pad 15 - Metronome;

Pad 16 – Loop;

7: Setup in Studio One;

1: Hold BT & PAD-B press Pad 7 select the Presets for Studio One;
In the Studio one – Options-External Devices , Click Add;



In the Mackie Control , Receive From & Send to select to
MIDIIN3(SMK25)&MIDIOUT3(SMK25)

In the New Keyboard, Receive From & Send to select to
MIDIIN2(SMK25)&MIDIOUT2(SMK25)

When Presets set properly, KNOB-B&PAD-B, will use to change settings inside Studio One
Play , Stop , Record button will automatically map to Daw transport control;

;

Knob9-Knob16 are volume for track 1 -track 8;

Pad 9 – Scroll up;

Pad 10 -Scroll down;

Pad 11 – Rewind;

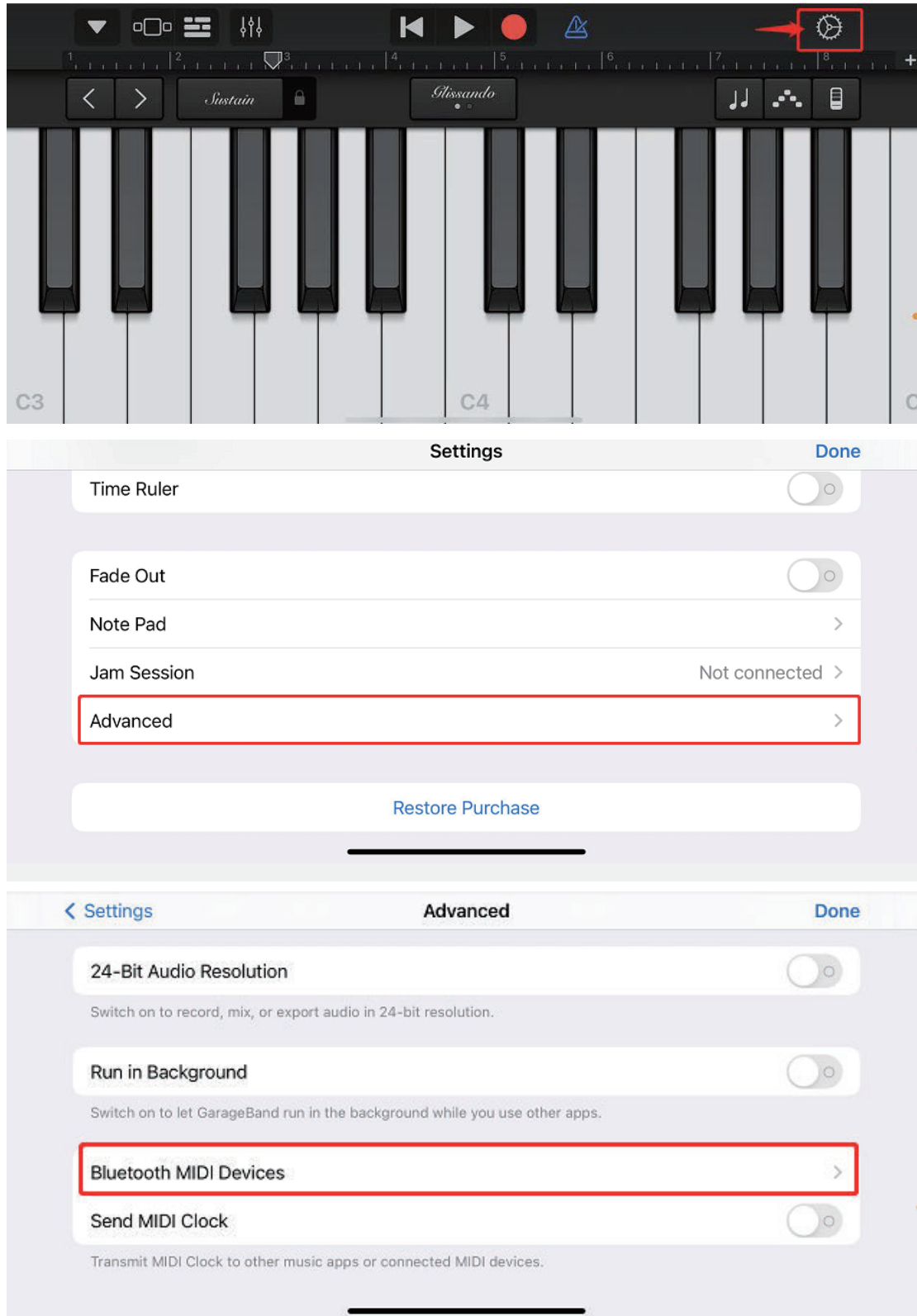
Pad 12 – Fast forward;

Pad 13-16 are recording for Track 1-Track 4;

8: Setup in GarageBand(iOS);

1: Hold BT & PAD-B press Pad 8 select the Presets for GarageBand;

2: Open up Garageband inside iOS device, Use Wireless function connect to the Device;



< Advanced	Bluetooth MIDI Devices	Edit
BLUETOOTH MIDI DEVICES		
FootCtrl Input / Output		Offline
SMK25 Input / Output		Connected
2 devices found		

When SMK25 connected to iOS device , Play , Stop , Record button will automatically map to GarageBand transport control;